

## Walker Stainless Equipment Company Single Shell Mix Tank- 1000 Gallon

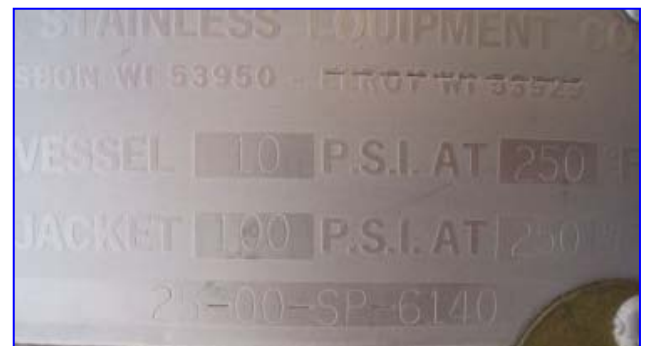
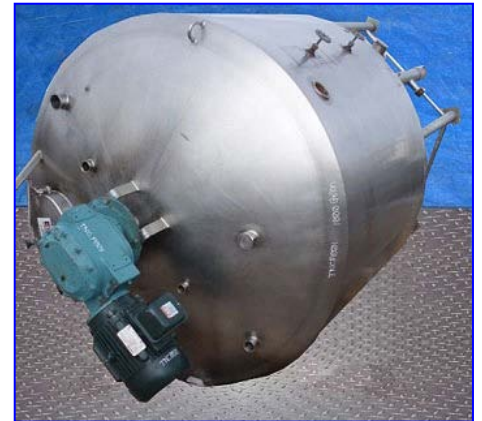
Mfg: Walker Stainless Equipment Company

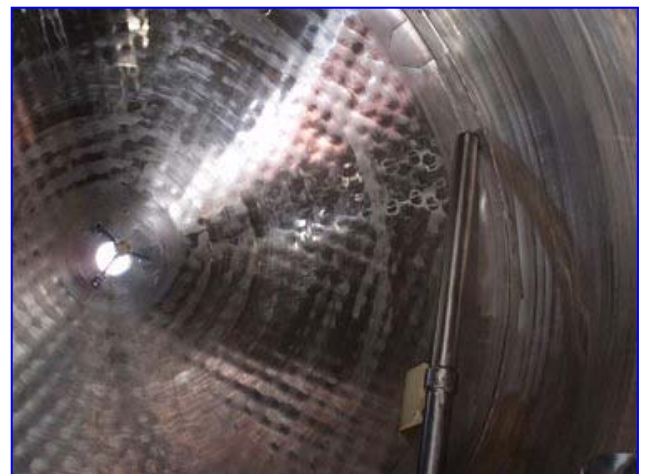
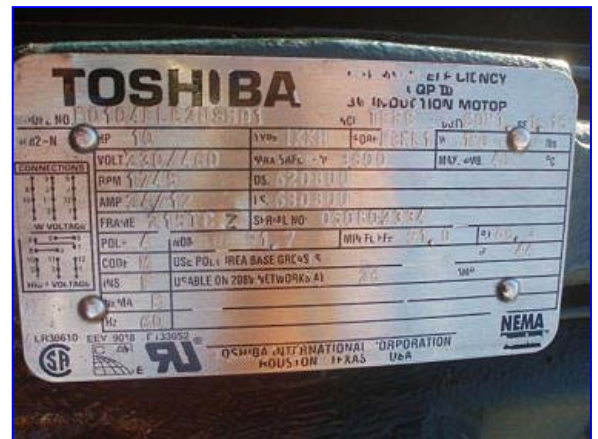
Model: PZ-CB-304SS

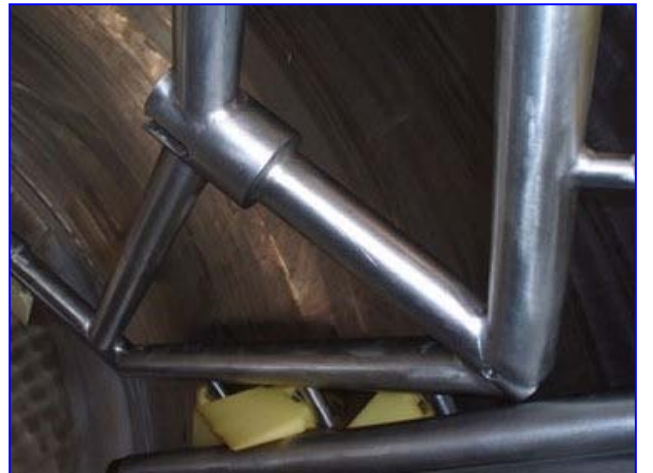
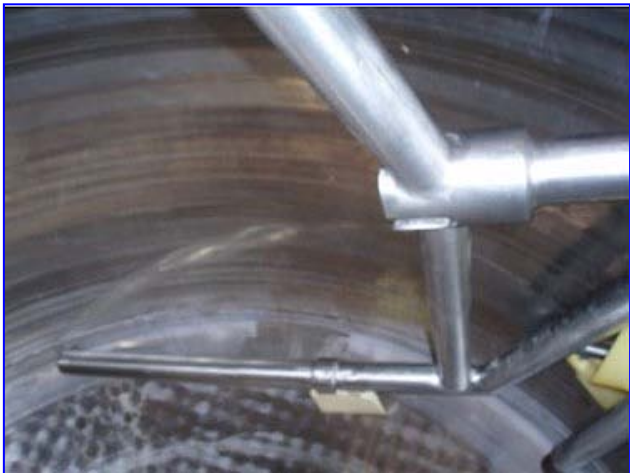
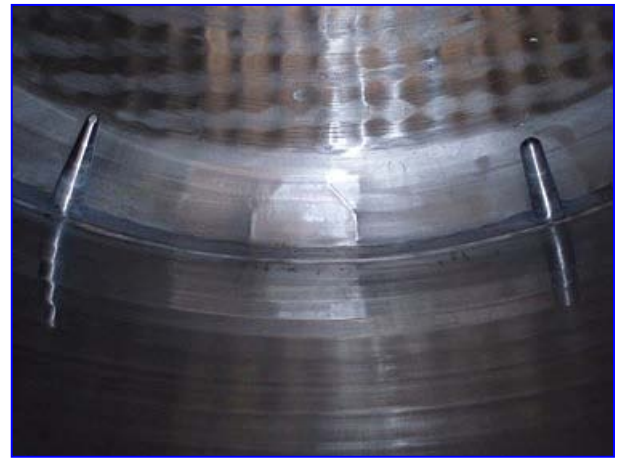
Stock No: TNCP001.20

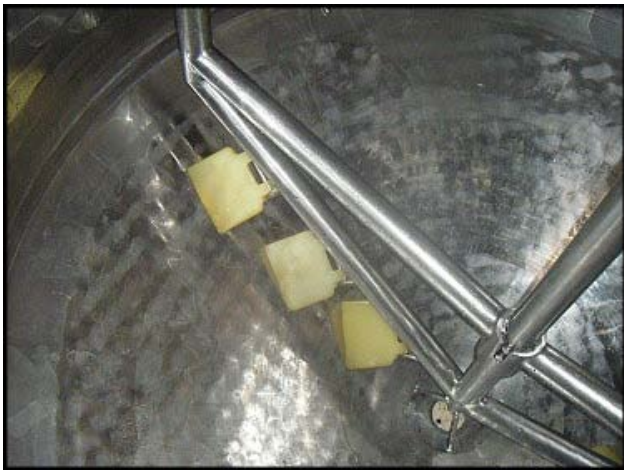
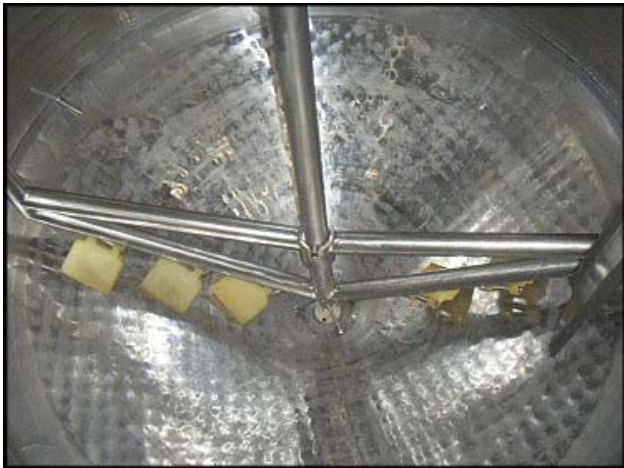
Serial No: 676

Walker Stainless Equipment Company Single Shell Mix Tank -1000 Gallon. Model: PZ-CB-304SS. S/N: 676. Material of construction: 304 Stainless Steel. Inside straight-wall dimensions: 6 ft. dia. x 4 ft. 7 in. H. Scraper Dimensions (8): 6 in. L x 4 ½ in. W. Baffle Dimensions (1): 7 in. W x 3 ft. 6 in. H Toshiba Electric Motor with Gear Drive, 10 hp, 1745 rpm, 230/460 V, 24/12 amps, 60 Hz, 3 phase. Inlets: (1) 1 ½ in. dia. S-line, (2) 2 in. dia. S-line, (1) 2 in. dia. ACME, (1) 2 ½ in. dia. ACME, (1) 3 in. dia. S-line, (1) 3 in. dia. (1) 4 in. dia. ACME. Outlets: (1) 1 ½ in. dia. (1) 3 in. dia. (1) 3 in. dia. flanged port (product). Overall dimensions: 6 ft. 6 in. L x 6 ft. 6 in. W x 10 ft. 5 in. H. (ACN350).











**Note: the following pictures show the exact unit prior to removal.**



