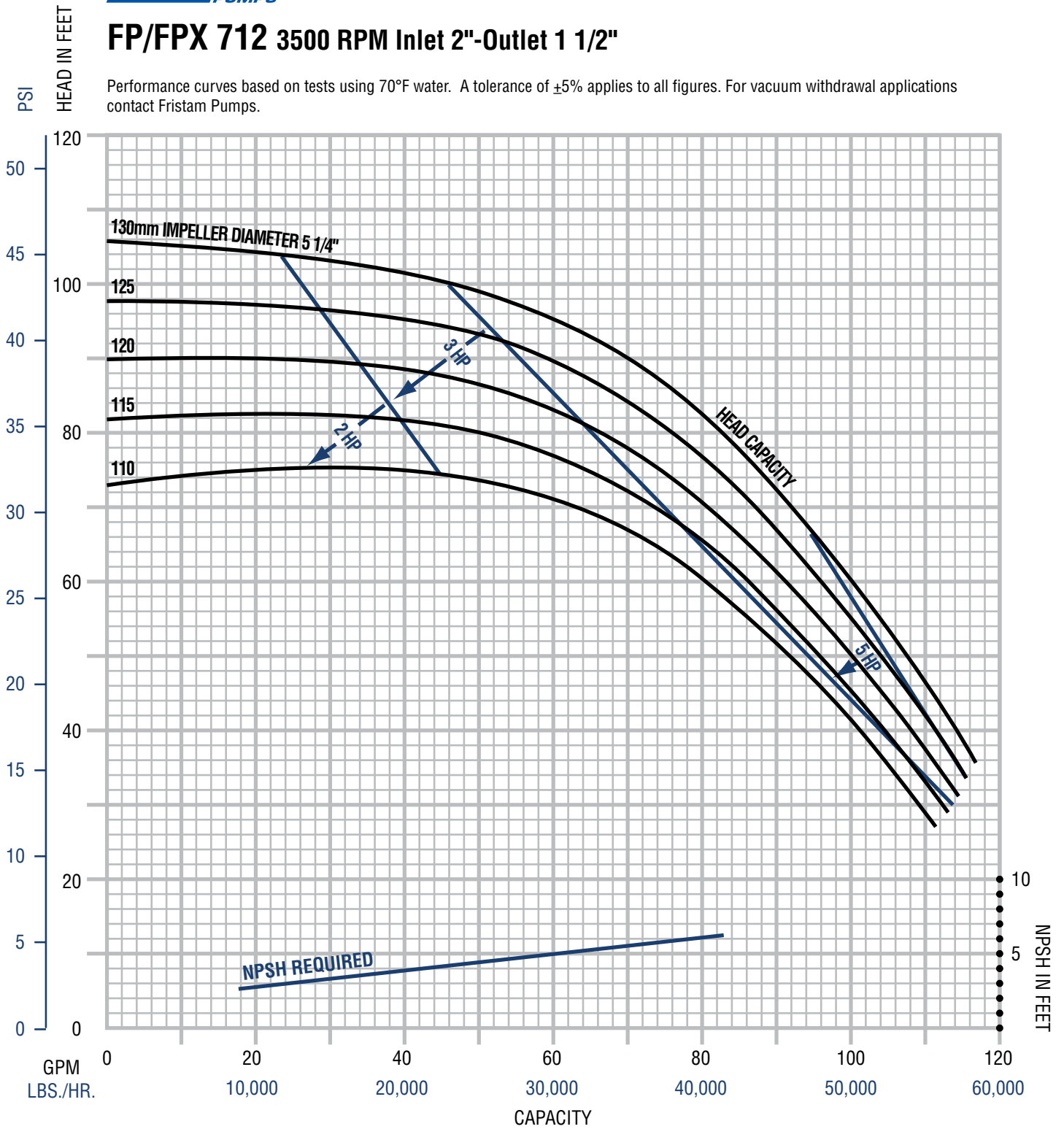


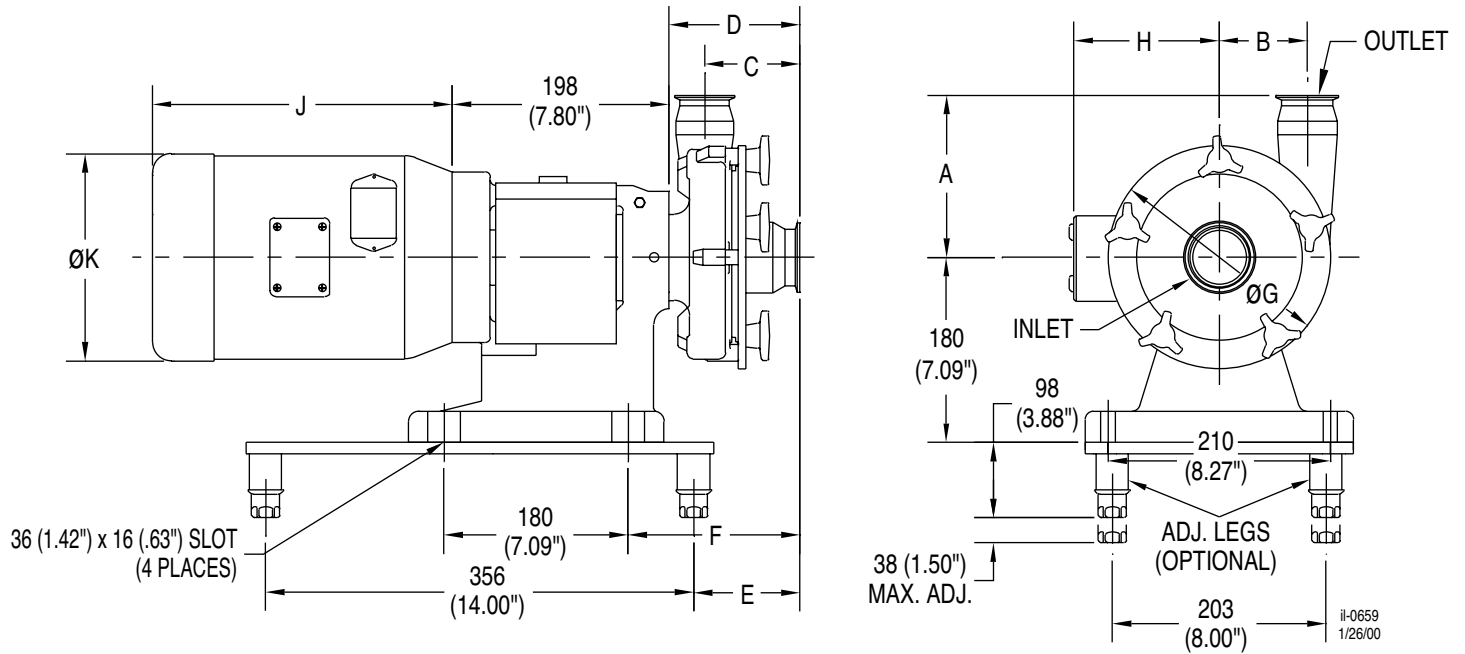


## FP/FPX 712 3500 RPM Inlet 2"-Outlet 1 1/2"

Performance curves based on tests using 70°F water. A tolerance of  $\pm 5\%$  applies to all figures. For vacuum withdrawal applications contact Fristam Pumps.



# FP Single Flange Dimensions



- NOTE:
- (1) Motor dimensions may vary depending on manufacturer requested.
  - (2) Pump dimensions are based on clamp fittings.
  - (3) All dimensions are in Millimeters (Inches).

PUMP MODEL	INLET	OUTLET	DIMENSIONS IN MILLIMETERS (INCHES)						
			A	B	C	D	E	F	ØG
FP 701/702	1.5"	1.5"	108 (4.25")	44.5 (1.75")	108.5 (4.27")	146.5 (5.77")	154.5 (6.08")	186.5 (7.34")	150 (5.90")
FP 711/712	2"	1.5"	144 (5.67")	58 (2.28")	113 (4.45")	150 (5.90")	158 (6.22")	190 (7.48")	185 (7.28")
FP 721/731/722	2"	1.5"	170 (6.69")	79 (3.11")	113 (4.45")	150 (5.90")	158 (6.22")	190 (7.48")	230 (9.06")
FP 741/732/742	2.5"	2"	195 (7.68")	96 (3.78")	101 (3.98")	141 (5.55")	149 (5.87")	181 (7.13")	270 (10.63")
FP 1741/1732/1742	2.5"	2"	200 (7.87")	91 (3.58")	104 (4.09")	150.5 (5.93")	158.5 (6.24")	190.5 (7.50")	270 (10.63")
FP 3521/3522	2.5"	2"	190 (7.48")	80 (3.15")	118 (4.64")	162 (6.38")	170 (6.69")	202 (7.95")	230 (9.06")
FP 3531/3532	2.5"	2"	191 (7.52")	95 (3.74")	115.5 (4.55")	162 (6.38")	170 (6.69")	202 (7.95")	260 (10.24")
FP 3541/3542	3"	2.5"	211 (8.31")	115 (4.53")	118 (4.64")	162 (6.38")	170 (6.69")	202 (7.95")	290 (11.42")
FP 3451/3452	3"	2"	211 (8.31")	140 (5.51")	114 (4.49")	158 (6.22")	166 (6.54")	198 (7.80")	350 (13.78")

MOTOR HP	MOTOR	DIMENSIONS IN MILLIMETERS (INCHES)		
		H	J	ØK
0.5 HP	56C	115 (4.53")	236 (9.29")	157 (6.19")
0.75 HP	56C	115 (4.53")	236 (9.29")	157 (6.19")
1 HP	56C	115 (4.53")	236 (9.29")	157 (6.19")
1 HP	143TC	115 (4.53")	252 (9.94")	157 (6.19")
1.5 HP	145TC	133 (5.22")	259 (10.19")	183 (7.19")
2 HP	145TC	133 (5.22")	284 (11.19")	183 (7.19")
	3 HP	145TC	133 (5.22")	284 (11.19")
3 HP	182TC	133 (5.23")	313 (12.31")	216 (8.50")
5 HP	184TC	152 (6.00")	348 (13.68")	216 (8.50")
	7.5 HP	184TC	152 (6.00")	386 (15.18")
7.5 HP	213TC	189 (7.46")	388 (15.27")	263 (10.34")
	10 HP	215TC	189 (7.46")	388 (15.27")
10 HP	215TC	189 (7.46")	416 (16.40")	263 (10.34")