

Stainless Steel 4-Tank CIP System – 150 Gallons Each

Mfg:

Model:

Stock No. HDST117.31

Serial No.

Stainless Steel 4-Tank CIP System. (4) 150 gallon stainless steel tanks. Inside tank dimensions: 2 ft. 10 in. dia. x 4 ft. 2 in. H. Inlets: (3) 2 in. dia. S-line fittings, (2) 1-1/2 in. dia. FNPT fittings. Outlets: (1) 2 in. dia. S-line fitting, (1) 2-1/2 in. dia. S line fitting, (1) 2-1/2 in. dia. overflow port. Overall dimensions: 3 ft. 5 in. dia. x 6 ft. 1 in. H.





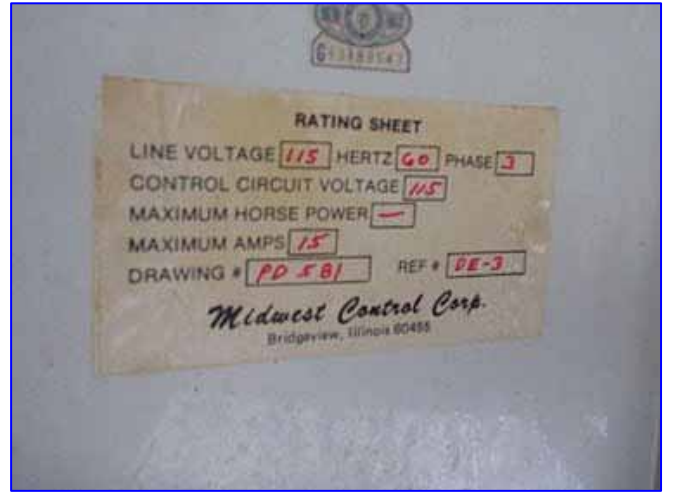
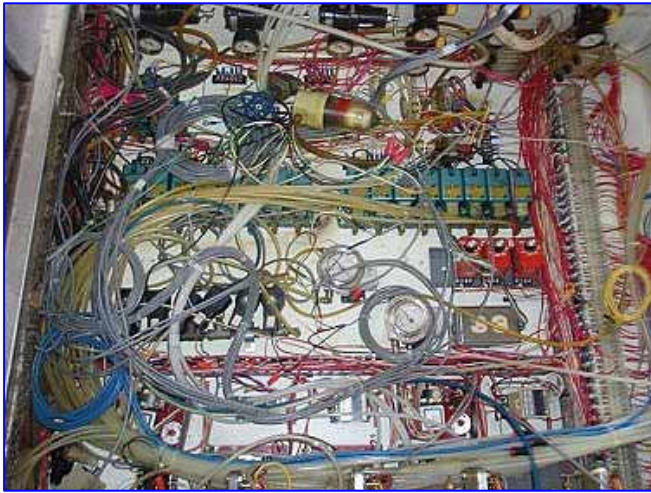
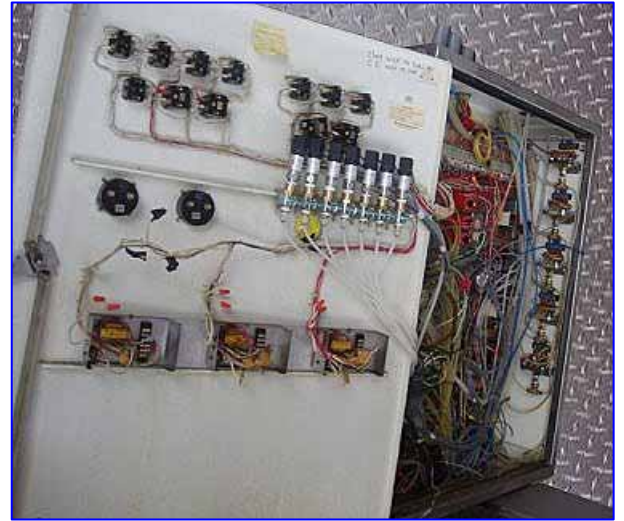
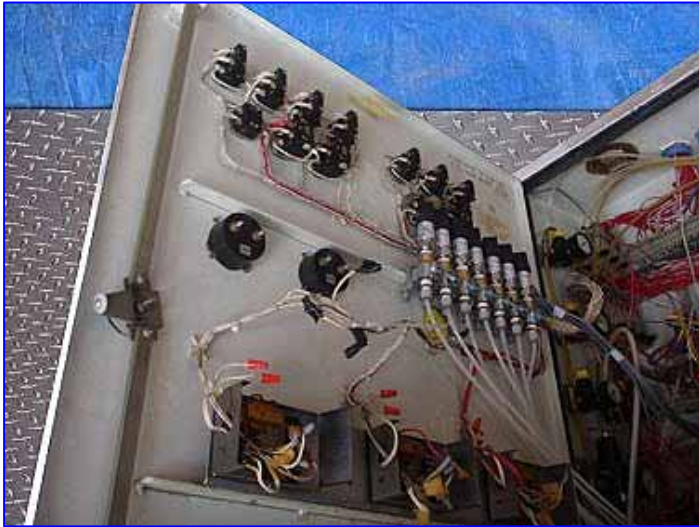


1999 ITT Bell & Gossett shell and tube heat exchanger, S/N: 735491-0101, Nat'l Bd: 68253. Heat transfer surface area: approx. 34.5 sq. ft. Capacity: 4.03 gallons. Shell and tube side MAWP: 150 psi @ 375 °F. Shell and tube side MDMT: -20 °F @ 150 psi. Overall dimensions: 4 ft. 10 in. L x 1 ft. 10-1/2 in. W x 9 in. H.



APV Crepaco centrifugal pump, Model: 6V, S/N: 6V-81. Impeller diameter: 5-1/4 in. Inlet: (1) 2-1/2 in. S-line fitting. Outlet: (1) 1-1/2 in. S-line fitting. Overall dimensions: 1 ft. 11-1/2 in. L x 11 in. W x 1 ft. 1 in. H.





Also includes: Taylor chart recorder, thermocouples, air operated sanitary valves, Magna control valves, Diversy Lever Shur-Sensor TC computerized controller and other sensors.

