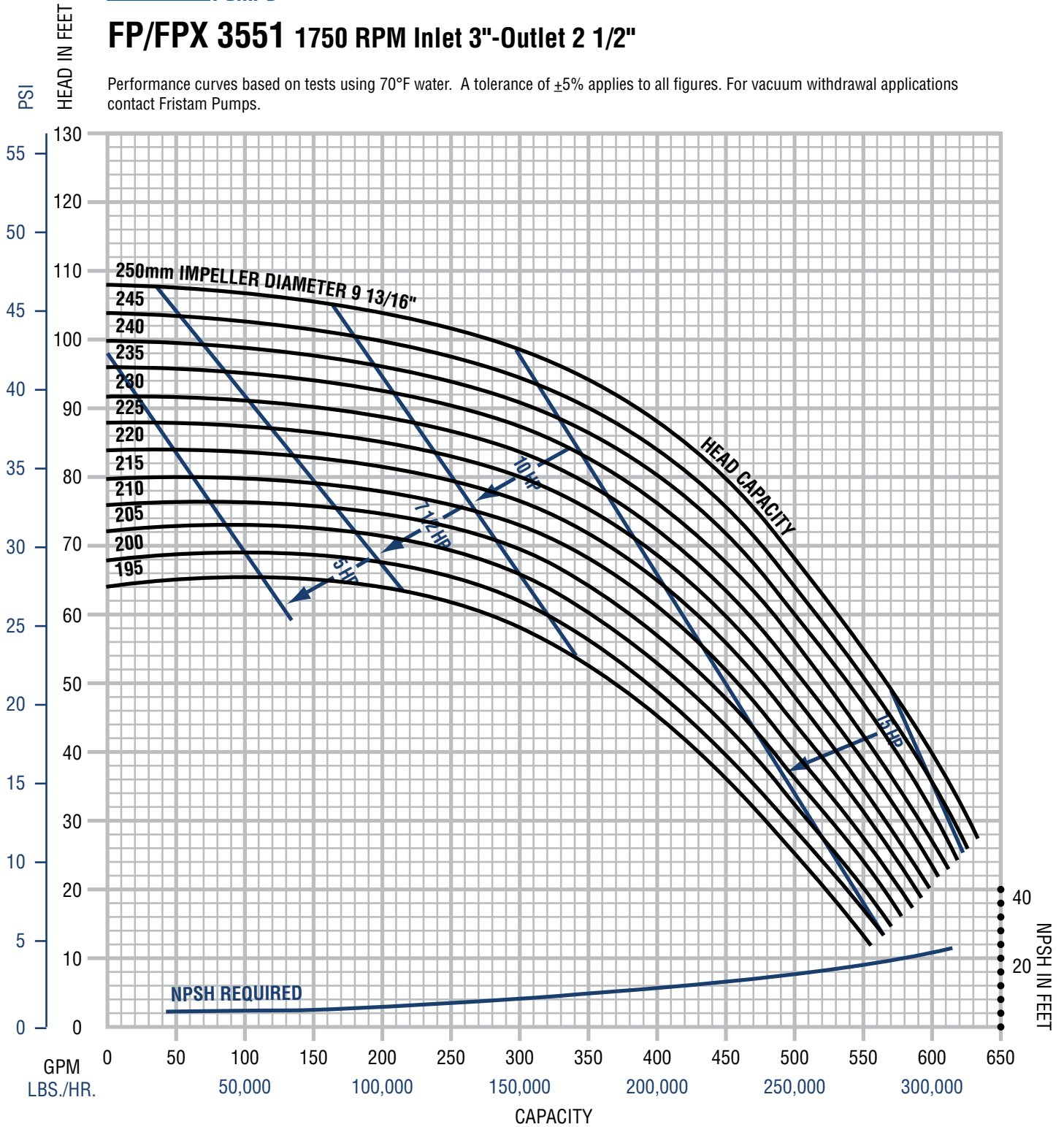


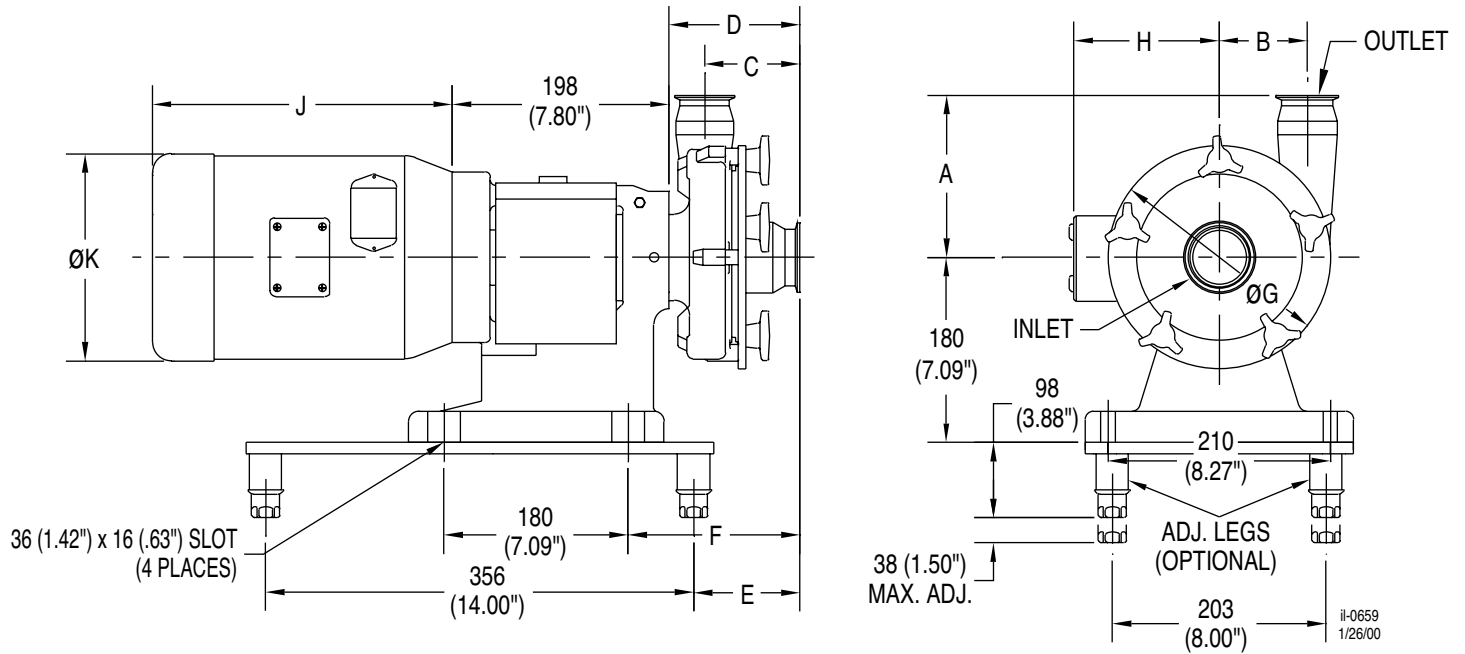


FP/FPX 3551 1750 RPM Inlet 3"-Outlet 2 1/2"

Performance curves based on tests using 70°F water. A tolerance of $\pm 5\%$ applies to all figures. For vacuum withdrawal applications contact Fristam Pumps.



FP Single Flange Dimensions



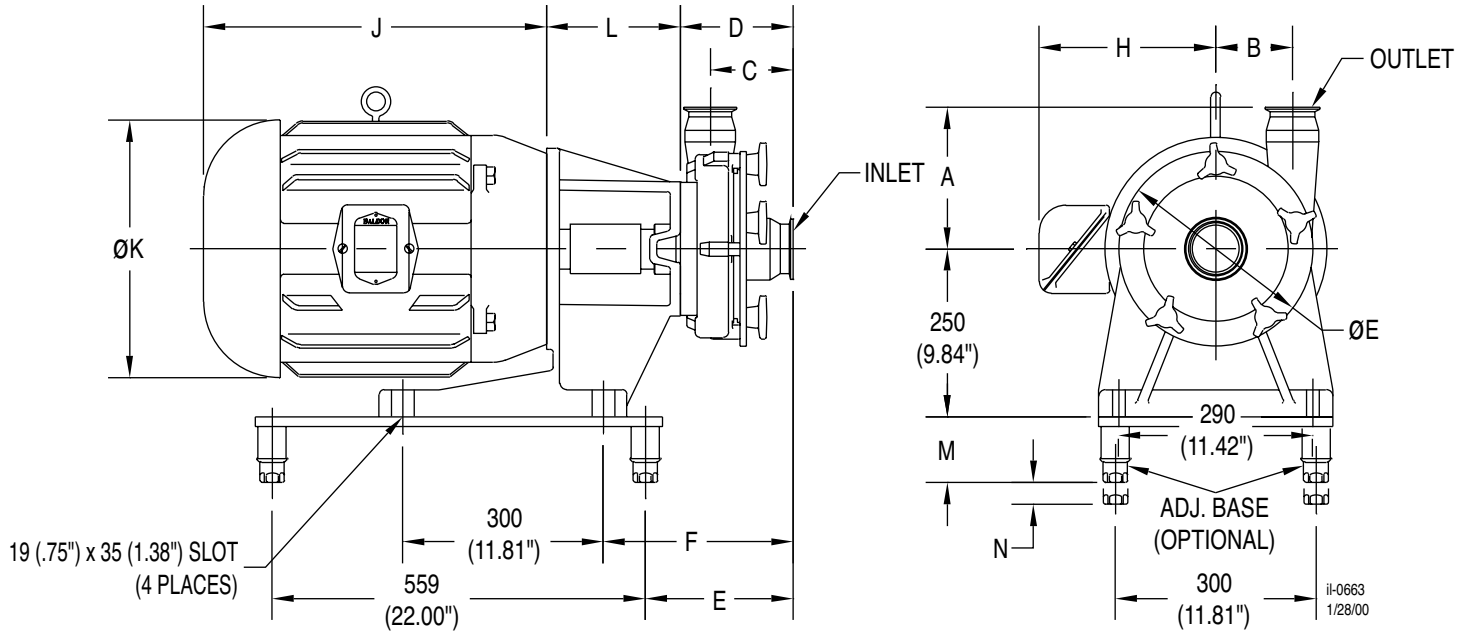
NOTE:

- (1) Motor dimensions may vary depending on manufacturer requested.
- (2) Pump dimensions are based on clamp fittings.
- (3) All dimensions are in Millimeters (Inches).

PUMP MODEL	INLET	OUTLET	DIMENSIONS IN MILLIMETERS (INCHES)						
			A	B	C	D	E	F	ØG
FP 701/702	1.5"	1.5"	108 (4.25")	44.5 (1.75")	108.5 (4.27")	146.5 (5.77")	154.5 (6.08")	186.5 (7.34")	150 (5.90")
FP 711/712	2"	1.5"	144 (5.67")	58 (2.28")	113 (4.45")	150 (5.90")	158 (6.22")	190 (7.48")	185 (7.28")
FP 721/731/722	2"	1.5"	170 (6.69")	79 (3.11")	113 (4.45")	150 (5.90")	158 (6.22")	190 (7.48")	230 (9.06")
FP 741/732/742	2.5"	2"	195 (7.68")	96 (3.78")	101 (3.98")	141 (5.55")	149 (5.87")	181 (7.13")	270 (10.63")
FP 1741/1732/1742	2.5"	2"	200 (7.87")	91 (3.58")	104 (4.09")	150.5 (5.93")	158.5 (6.24")	190.5 (7.50")	270 (10.63")
FP 3521/3522	2.5"	2"	190 (7.48")	80 (3.15")	118 (4.64")	162 (6.38")	170 (6.69")	202 (7.95")	230 (9.06")
FP 3531/3532	2.5"	2"	191 (7.52")	95 (3.74")	115.5 (4.55")	162 (6.38")	170 (6.69")	202 (7.95")	260 (10.24")
FP 3541/3542	3"	2.5"	211 (8.31")	115 (4.53")	118 (4.64")	162 (6.38")	170 (6.69")	202 (7.95")	290 (11.42")
FP 3451/3452	3"	2"	211 (8.31")	140 (5.51")	114 (4.49")	158 (6.22")	166 (6.54")	198 (7.80")	350 (13.78")

MOTOR HP	MOTOR	DIMENSIONS IN MILLIMETERS (INCHES)			
		H	J	ØK	
1750 RPM	3500 RPM	FRAME	H	J	ØK
0.5 HP	0.5 HP	56C	115 (4.53")	236 (9.29")	157 (6.19")
0.75 HP	0.75 HP	56C	115 (4.53")	236 (9.29")	157 (6.19")
1 HP	1 HP	56C	115 (4.53")	236 (9.29")	157 (6.19")
1 HP	1.5 HP	143TC	115 (4.53")	252 (9.94")	157 (6.19")
1.5 HP		145TC	133 (5.22")	259 (10.19")	183 (7.19")
2 HP	2 HP	145TC	133 (5.22")	284 (11.19")	183 (7.19")
	3 HP	145TC	133 (5.22")	284 (11.19")	183 (7.19")
3 HP		182TC	133 (5.23")	313 (12.31")	216 (8.50")
5 HP	5 HP	184TC	152 (6.00")	348 (13.68")	216 (8.50")
	7.5 HP	184TC	152 (6.00")	386 (15.18")	216 (8.50")
7.5 HP	7.5 HP	213TC	189 (7.46")	388 (15.27")	263 (10.34")
	10 HP	215TC	189 (7.46")	388 (15.27")	263 (10.34")
10 HP	15 HP	215TC	189 (7.46")	416 (16.40")	263 (10.34")

FP Double Flange Dimensions



NOTE:

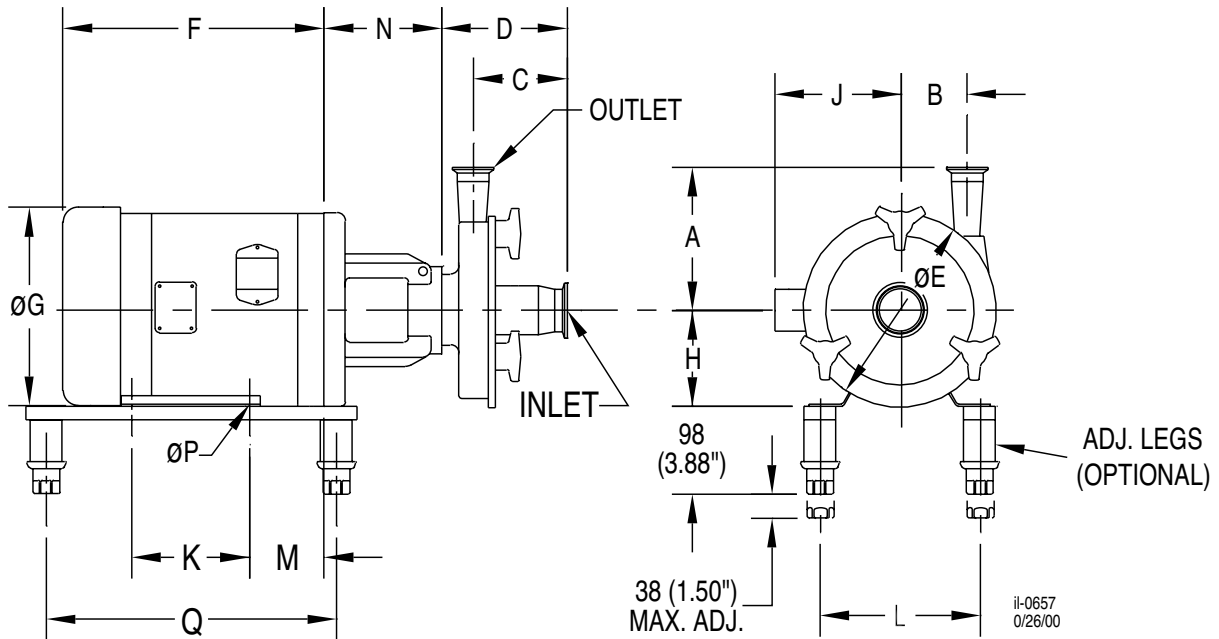
- (1) Motor dimensions may vary depending on manufacturer requested.
- (2) Pump dimensions are based on clamp fittings.
- (3) All dimensions are in Millimeters (Inches).

PUMP MODEL	INLET	OUTLET	DIMENSIONS IN MILLIMETERS (INCHES)						
			A	B	C	D	E	F	ØG
FP 1051	4"	4"	250 (9.84")	170 (6.69")	167 (6.57")	202.5 (7.97")	254 (10.00")	317.5 (12.50")	406 (15.98")
FP 1151	4"	4"	250 (9.84")	170 (6.69")	110.5 (4.35")	146 (5.75")	197.5 (7.78")	261 (10.28")	406 (15.98")
FP 1161	4"	4"	250 (9.84")	170 (6.69")	110.5 (4.35")	146 (5.75")	197.5 (7.78")	261 (10.28")	406 (15.98")
FP 1161	6"	4"	250 (9.84")	170 (6.69")	111 (4.37")	146 (5.75")	197.5 (7.78")	261 (10.28")	406 (15.98")
FP 742	2.5"	2"	195 (7.68")	96 (3.78")	101 (3.98")	143.5 (5.65")	195 (7.68")	258.5 (10.18")	270 (10.63")
FP 1732/1742	2.5"	2"	200 (7.87")	91 (3.58")	104 (4.09")	153 (6.02")	204.5 (8.05")	268 (10.55")	270 (10.63")
FP 3532	2.5"	2"	191 (7.52")	95 (3.74")	115.5 (4.55")	164.5 (6.48")	216 (8.50")	279.5 (11.00")	260 (10.24")
FP 3542	3"	2.5"	211 (8.31")	115 (4.53")	118 (4.64")	164.5 (6.48")	216 (8.50")	279.5 (11.00")	290 (11.42")
FP 3452	3"	2"	211 (8.31")	140 (5.51")	114 (4.49")	160.5 (6.32")	212 (8.35")	275.5 (10.85")	350 (13.78")
FP 3551/3552	3"	2.5"	231 (9.09")	140 (5.51")	119 (4.68")	170.5 (6.71")	222 (8.74")	285.5 (11.24")	350 (13.78")

MOTOR HP	MOTOR	DIMENSIONS IN MILLIMETERS (INCHES)								
		1750 RPM	3500 RPM	FRAME	H	J	ØK	L	M	N
*3 HP	182TC	133 (5.23")	313 (12.31")	216 (8.50")	200 (7.87")	117 (4.62")	44.5 (1.75")			
*5 HP	213TC	189 (7.46")	388 (15.27")	263 (10.34")	200 (7.87")	117 (4.62")	44.5 (1.75")			
**7.5 HP	213TC	189 (7.46")	388 (15.27")	263 (10.34")	200 (7.87")	117 (4.62")	44.5 (1.75")			
**10 HP	215TC	189 (7.46")	416 (16.40")	263 (10.34")	200 (7.87")	117 (4.62")	44.5 (1.75")			
15 HP	254TC	220 (8.67")	415 (16.33")	263 (10.34")	200 (7.87")	98*** (3.88")	38**** (1.50")			
20 HP	256TC	239 (9.42")	499 (19.66")	326 (13.25")	200 (7.87")	98*** (3.88")	38**** (1.50")			
	20 HP	256TC	225 (8.88")	491 (19.34")	263 (10.34")	98 (3.88")	38 (1.50")			
25 HP	284TC	333 (13.12")	588 (23.13")	395 (15.56")	200 (7.87")	117 (4.62")	44.5 (1.75")			
	25 HP	284TSC	333 (13.12")	588 (23.13")	395 (15.56")	98 (3.88")	38 (1.50")			
30 HP	286TC	333 (13.12")	588 (23.13")	395 (15.56")	200 (7.87")	117 (4.62")	44.5 (1.75")			
	30 HP	286TSC	333 (13.12")	588 (23.13")	395 (15.56")	98 (3.88")	38 (1.50")			
40 HP	324TSD	333 (13.12")	588 (23.13")	395 (15.56")	220 (8.66")	117 (4.62")	44.5 (1.75")			
	40 HP	324TSD	333 (13.12")	588 (23.13")	395 (15.56")	220 (8.66")	117 (4.62")	44.5 (1.75")		
50 HP	326TSD	333 (13.12")	588 (23.13")	395 (15.56")	220 (8.66")	117 (4.62")	44.5 (1.75")			
	50 HP	326TSD	333 (13.12")	588 (23.13")	395 (15.56")	220 (8.66")	117 (4.62")	44.5 (1.75")		

* 3551 ONLY
 ** 3551, 1051 AND 1151 ONLY
 *** 117 (4.62") FOR 1051, 1151, AND 1161
 **** 44.5 (1.75") FOR 1051, 1151, AND 1161

FPX Single Flange Dimensions



NOTE:

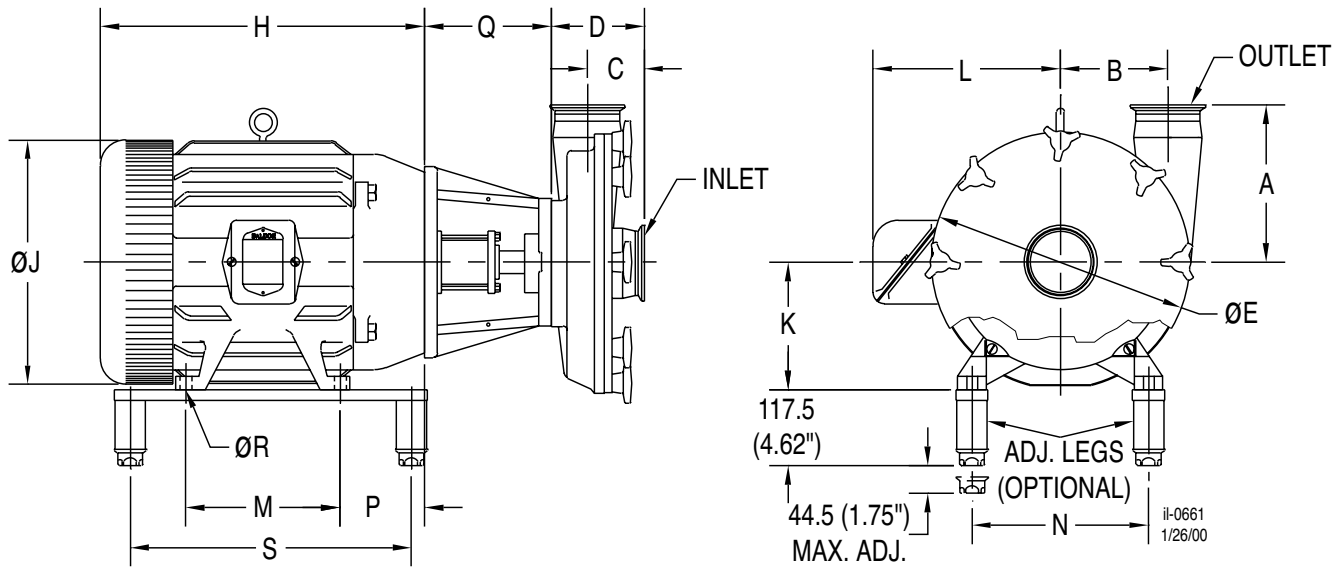
- (1) Motor dimensions may vary depending on manufacturer requested.
- (2) Pump dimensions are based on clamp fittings.
- (3) All dimensions are in Millimeters (Inches).

PUMP MODEL	INLET	OUTLET	DIMENSIONS IN MILLIMETERS (INCHES)					MOTOR HP		MOTOR FRAME	DIMENSIONS IN MILLIMETERS (INCHES)									
			A	B	C	D	ØE	1750 RPM	3500 RPM		F	ØG	H	J	K	L	M	N	ØP	Q
FPX 701/702	1.5"	1.5"	108	44.5	108.5	146.5	150	1 HP	1.5 HP	143TC	281	183	89	133	102	140	70	120	8.7	343
			(4.25")	(1.75")	(4.27")	(5.77")	(5.90")	(11.06")	(7.19")	(3.50")	(5.22")	(4.00")	(5.50")	(2.75")	(4.72")	(11/32")	(13.50")			
FPX 711/712	2"	1.5"	144	58	113	150	185	1.5 HP		145TC	281	183	89	133	102	140	70	120	8.7	343
			(5.67")	(2.28")	(4.45")	(5.90")	(7.28")	(11.06")	(7.19")	(3.50")	(5.22")	(4.00")	(5.50")	(2.75")	(4.72")	(11/32")	(13.50")			
FPX 721/731/722	2"	1.5"	170	79	113	150	230	2 HP	2 HP	145TC	281	183	89	133	102	140	70	120	8.7	343
			(6.69")	(3.11")	(4.45")	(5.90")	(9.06")	(11.06")	(7.19")	(3.50")	(5.22")	(4.00")	(5.50")	(2.75")	(4.72")	(11/32")	(13.50")			
FPX 741/732/742	2.5"	2"	195	96	101	141	270	3 HP		182TC	313	183	114	132	140	191	89	140	10.3	343
			(7.68")	(3.78")	(3.98")	(5.55")	(10.63")	(12.31")	(7.19")	(4.50")	(5.21")	(5.50")	(7.50")	(3.50")	(5.53")	(13/32")	(13.50")			
FPX 1741/1732/1742	2.5"	2"	195	96	101	141	270	3 HP		182TC	348	183	114	132	140	191	89	140	10.3	343
			(7.68")	(3.78")	(3.98")	(5.55")	(10.63")	(13.69")	(7.19")	(4.50")	(5.21")	(5.50")	(7.50")	(3.50")	(5.53")	(13/32")	(13.50")			
FPX 1741/1732/1742	2.5"	2"	200	91	104	150.5	270	5 HP		184TC	347	216	114	152	140	191	89	140	10.3	343
			(7.87")	(3.58")	(4.09")	(5.93")	(10.63")	(13.68")	(8.50")	(4.50")	(5.97")	(5.50")	(7.50")	(3.50")	(5.53")	(13/32")	(13.50")			
FPX 3521/3522	2.5"	2"	190	80	118	162	230	5 HP	5 HP	184TC	386	216	114	152	140	191	89	140	10.3	343
			(7.48")	(3.15")	(4.64")	(6.38")	(9.06")	(15.18")	(8.50")	(4.50")	(5.97")	(5.50")	(7.50")	(3.50")	(5.53")	(13/32")	(13.50")			
FPX 3521/3522	2.5"	2"	190	80	118	162	230	7.5 HP		184TC	386	216	114	152	140	191	89	140	10.3	343
			(7.48")	(3.15")	(4.64")	(6.38")	(9.06")	(15.18")	(8.50")	(4.50")	(5.97")	(5.50")	(7.50")	(3.50")	(5.53")	(13/32")	(13.50")			
FPX 3531/3532	2.5"	2"	191	95	115.5	162	260	7.5 HP	7.5 HP	213TC	388	263	133	1.89	140	216	108	140*	10.3	343
			(7.52")	(3.74")	(4.55")	(6.38")	(10.24")	(15.27")	(10.34")	(5.25")	(7.46")	(5.50")	(8.50")	(4.25")	(5.53")	(13/32")	(13.50")			
FPX 3541/3542	3"	2.5"	211	115	118	162	290	10 HP		215TC	416	263	133	1.89	140	216	108	140*	10.3	343
			(8.31")	(4.53")	(4.64")	(6.38")	(11.42")	(16.49")	(10.34")	(5.25")	(7.46")	(5.50")	(8.50")	(4.25")	(5.53")	(13/32")	(13.50")			
FPX 3541/3542	3"	2.5"	211	115	118	162	290	10 HP	10 HP	215TC	436	263	133	1.89	140	216	108	140	10.3	343
			(8.31")	(4.53")	(4.64")	(6.38")	(11.42")	(17.15")	(10.34")	(5.25")	(7.46")	(5.50")	(8.50")	(4.25")	(5.53")	(13/32")	(13.50")			
FPX 3451/3452	3"	2"	211	140	114	158	350	15 HP		254TC	447	263	159	225	210	254	121	169	13.5	343
			(8.31")	(5.51")	(4.49")	(6.22")	(13.78")	(17.59")	(10.34")	(6.25")	(8.88")	(8.25")	(10.00")	(4.75")	(6.65")	(17/32")	(13.50")			
FPX 3451/3452	3"	2"	211	140	114	158	350	15 HP	15 HP	256TC	491	263	159	225	254	254	121	169	13.5	394
			(8.31")	(5.51")	(4.49")	(6.22")	(13.78")	(19.34")	(10.34")	(6.25")	(8.88")	(10.00")	(10.00")	(4.75")	(6.65")	(17/32")	(15.50")			
FPX 3551	3"	2.5"	231	140	119	168	350	20 HP		256TC	499	336	159	239	254	254	121	169	13.5	394
			(9.09")	(5.51")	(4.68")	(6.61")	(13.78")	(19.66")	(13.25")	(6.25")	(9.42")	(10.00")	(10.00")	(4.75")	(6.65")	(17/32")	(15.50")			

*169 (6.65") FOR 3351 ONLY

iI-0656 02/08/00

FPX Double Flange Dimensions



- NOTE:
- (1) Motor dimensions may vary depending on manufacturer requested.
 - (2) Pump dimensions are based on clamp fittings.
 - (3) All dimensions are in Millimeters (Inches).

PUMP MODEL	INLET	OUTLET	DIMENSIONS IN MILLIMETERS (INCHES)						MOTOR HP		MOTOR FRAME	DIMENSIONS IN MILLIMETERS (INCHES)									
			A	B	C	D	ØE	1750 RPM	3500 RPM	H		ØJ	K	L	M	N	P	Q	ØR	S	
FPX 1051	4"	4"	250 (9.84")	170 (6.69")	167 (6.57")	202.5 (7.97")	406 (15.98")		7.5 HP*	213TC	388 (15.27")	263 (10.34")	133 (5.25")	189 (7.46")	140 (5.50")	216 (8.50")	108 (4.25")	200 (7.87")	10.3 (13/32")	470 (18.50")	
FPX 1151	4"	4"	250 (9.84")	170 (6.69")	110.5 (4.35")	146 (5.75")	406 (15.98")		10 HP*	215TC	416 (16.40")	263 (10.34")	133 (5.25")	189 (7.46")	178 (7.00")	216 (8.50")	108 (4.25")	200 (7.87")	10.3 (13/32")	470 (18.50")	
FPX 1161	4"	4"	250 (9.84")	170 (6.69")	110.5 (4.35")	146 (5.75")	406 (15.98")		15 HP*	254TC	447 (17.59")	270 (10.62")	159 (6.25")	226 (8.88")	210 (8.25")	254 (10.00")	121 (4.75")	200 (7.87")	13.5 (17/32")	444 (17.50")	
FPX 1161	6"	4"	250 (9.84")	170 (6.69")	111 (4.37")	146 (5.75")	406 (15.98")		20 HP*	256TC	499 (19.66")	320 (12.60")	159 (6.25")	239 (9.42")	254 (10.00")	254 (10.00")	121 (4.75")	200 (7.87")	13.5 (17/32")	470 (18.50")	
FPX 1742	2.5"	2"	200 (7.87")	91 (3.58")	104 (4.09")	153 (6.02")	270 (10.63")		25 HP	284TC	588 (23.13")	367 (14.44")	178 (7.00")	333 (13.11")	241 (9.50")	279 (11.00")	121 (4.75")	200 (7.87")	13.5 (17/32")	444 (17.50")	
FPX 3532	2.5"	2"	191 (7.52")	95 (3.74")	115.5 (4.55")	164.5 (6.48")	260 (10.24")		25 HP	284TSC	588 (23.13")	367 (14.44")	178 (7.00")	333 (13.11")	241 (9.50")	279 (11.00")	121 (4.75")	200 (7.87")	13.5 (17/32")	444 (17.50")	
FPX 3542	3"	2.5"	211 (8.31")	115 (4.53")	118 (4.64")	164.5 (6.48")	290 (11.42")		30 HP	286TC	588 (23.13")	367 (14.44")	178 (7.00")	333 (13.11")	279 (11.00")	279 (11.00")	121 (4.75")	200 (7.87")	13.5 (17/32")	444 (17.50")	
FPX 3452	3"	2"	211 (8.31")	140 (5.51")	114 (4.49")	160.5 (6.32")	350 (13.78")		30 HP	286TSC	588 (23.13")	367 (14.44")	178 (7.00")	333 (13.11")	279 (11.00")	279 (11.00")	121 (4.75")	200 (7.87")	13.5 (17/32")	444 (17.50")	
FPX 3552	3"	2.5"	231 (9.09")	140 (5.51")	119 (4.68")	170.5 (6.71")	350 (13.78")		40 HP	324TC	636 (25.00")	413 (16.25")	203 (8.00")	371 (14.62")	267 (10.50")	318 (12.50")	133 (5.25")	216 (8.50")	16.7 (21/32")	470 (18.50")	
									40 HP	324TSC	636 (25.00")	413 (16.25")	203 (8.00")	371 (14.62")	267 (10.50")	318 (12.50")	133 (5.25")	216 (8.50")	16.7 (21/32")	470 (18.50")	
									50 HP	326TC	636 (25.00")	413 (16.25")	203 (8.00")	371 (14.62")	305 (12.00")	318 (12.50")	133 (5.25")	216 (8.50")	16.7 (21/32")	470 (18.50")	
									50 HP	326TSC	636 (25.00")	413 (16.25")	203 (8.00")	371 (14.62")	305 (12.00")	318 (12.50")	133 (5.25")	216 (8.50")	16.7 (21/32")	470 (18.50")	

*1051, 1151, 1161 ONLY

il-0660
01/26/00