

**1998 Evapco Fluid cooler / Evaporative Condenser – 83 Tons**

**Mfg: Evapco**

**Model: ATW-68B2**

**Stock No: CPEG401.40**

**Serial No: 992414**

1998 Evapco fluid cooler / evaporative condenser. Model: ATW-68B2. S/N: 992414. Capacity ratings: approximately 83 tons as an evaporative condenser using R-22 at 105°F condensing, 40°F suction and 78°F wet bulb temperatures, or 60 tons using R-717 at 96.3°F condensing, 20°F suction and 78°F wet bulb temperatures. As a fluid cooler it is rated for 250 gpm using a 30% propylene glycol solution with a 75°F wet bulb temperature and respective 95°F and 85°F entering and leaving temperatures. Coil test pressure: 400 psig. (1) 6 ft. dia. fan. Includes all pumps and stands: (2) Paco centrifugal pumps with US electric motors 10 hp, 1755 rpm, 230/460 V, 24.8/12.4 amps, 60 HZ, 3 phase. (1) basin pump with Dayton electric motor, 2.0 hp, 1725 rpm, 208-230/460 V, 6.5-6.2/3.1 amps, 60 Hz. 3 phase. (2) ITT 3 in. triple duty valves. (1) 4 in. 3-way con. valve. (2) 4 in. y strainers. (3) Square D starters. (1) KMC digital control panel. (2) Taco expansion tanks. Natl. Bd. Num.: 160069, and 137378.) 1 ft. 4 ½ in. W x 2 ft. 4 in. H. access door. Inlets: (1) 4 in. port, (1) 1 ¼ in. water make up port. Outlets: (1) 4 in. port, (1) 3 ½ in. overflow port, (1) 2 in. drain port, (2) 1 in. drain ports. Approximate shipping and operating weights: 8470 lbs./12970 lbs. Overall dimensions: 12 ft. 9 in. L x 8 ft. 4 in. W x 12 ft. 4 in. H.(ACN440).(BE).



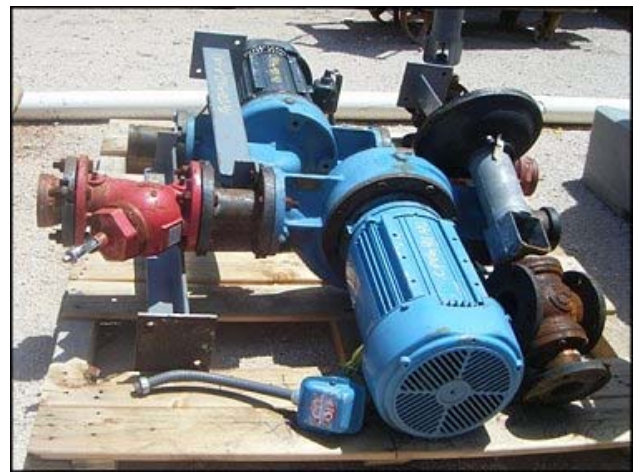


















**evapco**

**EVAPCO, INC.**  
 5151 Allendale Lane Taneytown, MD, 21787  
 (410) 756-2600 Fax # (410) 756-6450  
 MFG. UNDER ONE OR MORE OF THE FOLLOWING U.S. PATENTS:  
 4500330, 4579694, 4759331, 5124087

MODEL NO. <b>ATW-68B2</b>		SERIAL NO. <b>992414</b>
BELT NO. <b>3B-148</b>	COIL TEST PRESSURE <b>400 P.S.I.G.</b>	

MADE IN U.S.A.

FOR EVAPCO AUTHORIZED PARTS AND SERVICE, CONTACT MR. GOODTOWER™

T.P. WOODSIDE, INC.  
 60 Lawrence Bell Drive  
 Williamsville, NY 14221-7074

Mr. GoodTower™

**TRIPLE DUTY VALVE**  
**TTT Bell & Gossett**  
 Morton Grove, IL U.S.A.

100  
90  
80  
70  
60  
50  
40  
30  
20  
10  
0

% OPEN

CLOSED

MAX. PRESSURE 175 PSIG  
 MAX. TEMPERATURE 250°F

REV

B  
A  
G

Vibration

PART NO. **132123**  
 MODEL NO. **3DS-3S**  
 SERIAL NO. **146369**

**ENCLOSED PREMIUM EFFICIENCY MOTOR**

MODEL G29312 HP 10 PH 3 HZ 60 RPM 1750 DES

FRAME 215JM TYPE UTE4 ENCL TE SF 1.25 CODE H

VOLTS 230/460 MAX AMB 40 °C DUTY CONT. NEMA NOM EFFICIENCY

FL AMPS 24.8/12.4 SHAFT END BRG 6309-22-3/C3

SF AMPS 30.0/15.0 OPP END BRG 6208-22-3/C3

ID# B11 01029624 001 F .. PF 85.0 MAX. K.V.A.R. 2.2

CAT.# UJ1826M

ALTERNATE RATINGS ▶ 40°C AMB 1.15 SF CLASS B RISE OR 50°C AMB 1.15 SF CLASS F RISE

**U.S. ELECTRICAL MOTORS**  
 DIVISION OF EMERSON ELECTRIC CO.  
 ST. LOUIS, MO  
 MADE IN U.S.A. 391841-232

HI VOLT N LO VOLT

MODEL H18861 FR 215T ENCL TE TYPE FUT PH 3  
 ENCL 6208-22-J/C3 OFF ENCL 6208-22-J/C3 MAX AMB 40 °C DUTY CONT.  
 ID# C01 01032855 003 F - INSL CLASS F USABLE ON 200V 50HZ AT MAX AMPS N/A

SF 1.25 HP 10.0 RPM 1755 DESIGN B CODE H  
 VOLTS 209-230/460 MAX KW 2.9 NEMA NOM EFFICIENCY 89.5  
 AMPS 27.2-24.8/12.3 NEMA PF 84.9 GUARANTEED EFFICIENCY 87.5  
 SF AMPS 31.0/15.5 HZ 60

U.S. ELECTRICAL MOTORS  
 DIVISION OF EMERSON ELECTRIC CO.  
 ST. LOUIS, MO  
 MADE IN U.S.A.

WORLD MOTOR  
 ENERGY EFFICIENT MOTOR  
 967737

DELTA CONNECTION  
 120 VOLTS

ENCLOSED PREMIUM EFFICIENCY MOTOR UNIMOUNT 125

MODEL 629312 HP 10 PH 3 HZ 60 RPM 1755 DES B  
 FRAME 215JM TYPE UTE4 ENCL TE SF 1.25 CODE H INSL CLASS F  
 VOLTS 230/460 MAX AMB 40 °C DUTY CONT. NEMA NOM EFFICIENCY 91.7  
 FL AMPS 24.8/12.4 SHAFT END BRG 6208-22-J/C3  
 SF AMPS 30.0/15.0 OPP END BRG 6208-22-J/C3

ID# B11 01029624 001 F .. P.F. 85.0 MAX. K.V.A.R. 2.2  
 CAT.# UTE4-2BM

ALTERNATE RATINGS  
 40°C AMB 1.15 SF CLASS B RISE OR 50°C AMB 1.15 SF CLASS F RISE

TRICAL MOTORS  
 EMERSON ELECTRIC CO.  
 ST. LOUIS, MO  
 MADE IN U.S.A. 391841-232

L-O-O-Y-O-O-O  
 T-N-C-O-O-O  
 E-O-N-O-O-O  
 HI VOLT N LO VOLT

Do not use eyebolts or lifting hooks to lift anything except the product. 931900

**Dayton** Industrial Motor E47479 © LR6153

MODEL NO 3179 1B VOLTS 208-230/460  
 HP 2.00 RPM 1725 AMPS 6.5-6.7/3.3  
 PH 3 FRAME 145JM TYPE UT-4 SFA 7.40/3.7

SF 1.25 HZ 60 NEMA DESIGN B INSL CLASS F  
 ENCL TE MAX KW 4.0 C LR KVA CODE 1  
 DUTY CONT POWER FACTOR 82.5  
 MAX KW 4.0 C NEMA NOM EFF 82.5  
 MOTOR REF SHAFT END BRG 6206 OPP END BRG 6203

945078

Manufactured for Dayton Electric Mfg. Co., Niles, IL 60714 U.S.A. Made in Mexico

**SPECIAL FEATURES** B533059  
 MAX AMPS AT 208V, 60HZ  
 7.40 AMPS, 50HZ, 190/360V  
 7.4/3.7 AKPS

SF 1.25 HZ 60 DESIGN B CLASS F  
 ENCL TE MAX AMB 40 °C CODE 1  
 DUTY CONT POWER FACTOR 82.5  
 MOTOR REF SHAFT END BRG 6206 OPP END BRG 6203

To reverse rotation interchange any two line leads.

Manufactured for Dayton Electric Mfg. Co., Niles, IL 60714 U.S.A. Made in Mex

**SPECIAL FEATURES** B533059  
 MAX AMPS AT 208V, 60HZ  
 7.40 AMPS, 50HZ, 190/360V  
 7.4/3.7 AKPS

**"Y" STRAINER**

MODEL 758 SIZE

ANSI CLASS 125 lb.

MUELLER STEAM SPECIALTY  
 ST. PAULS, NC

**"Y" STRAINER**

MODEL 758 SIZE

ANSI CLASS 125 lb.

MUELLER STEAM SPECIALTY  
 ST. PAULS, NC

**PACO PUMPS**

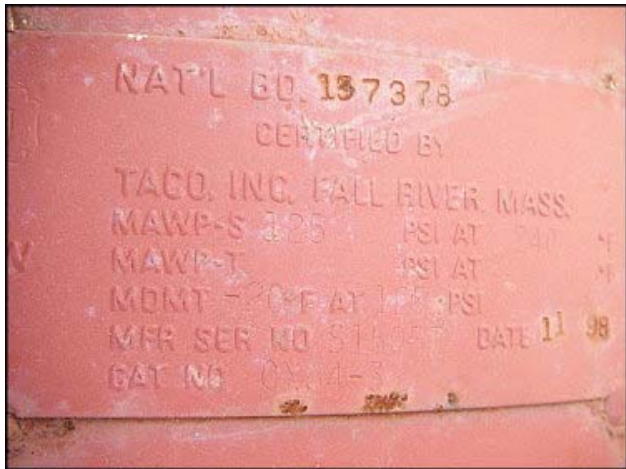
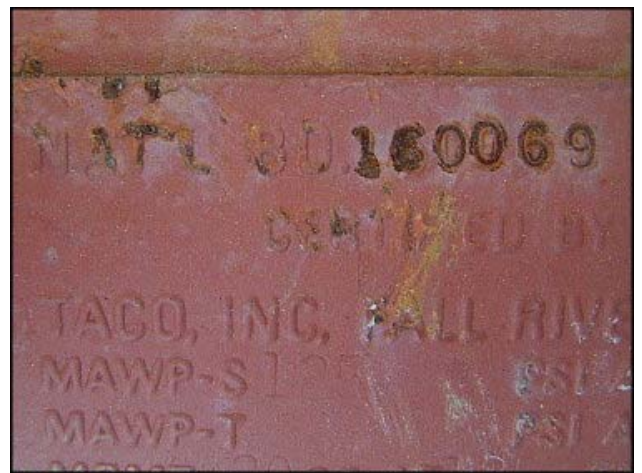
CAT# V1 3005-5  
 STOCK#  
 SER# LS 3100  
 GPM 250 TDH 70 DIA 9.25

BROOKSHIRE, TEXAS 30014212

**PACO PUMPS**

CAT# V1 3005-5  
 STOCK#  
 SER# LS 3100  
 GPM 250 TDH 70 DIA 9.25

BROOKSHIRE, TEXAS 30014212



**HEAVY DUTY SAFETY SWITCH**  
**INTERRUPTOR DE SEGURIDAD DE SERVICIO PESADO**

**SQUARE D** 30 AMP  
 600 Vac / V~ 600 Vdc / V-

**⚡ DANGER / PELIGRO**

**HAZARD OF ELECTRIC SHOCK, BURN OR EXPLOSION**  
**PELIGRO DE DESCARGA ELECTRICA, QUEMADURAS O EXPLOSION**

- Never operate switch with door open. Keep door fastened.
- Turn off switch before removing or installing fuses or making load side connections.
- Always use a properly rated voltage sensing device at all line and load side fuse clips to confirm switch is off.
- Turn off power supplying switch before doing any other work on or inside switch.

Failure to follow these instructions will result in death or serious injury.

To lock out switch, place padlock thru hole in top cover and above handle.

40275-889-01

**HEAVY DUTY SAFETY SWITCH**  
**INTERRUPTOR DE SEGURIDAD DE SERVICIO PESADO**

**SQUARE D** 30 AMP  
 600 Vac / V~ 600 Vdc / V-

**⚡ DANGER / PELIGRO**

**HAZARD OF ELECTRIC SHOCK, BURN OR EXPLOSION**  
**PELIGRO DE DESCARGA ELECTRICA, QUEMADURAS O EXPLOSION**

- Nunca haga funcionar el interruptor con la puerta abierta. Mantenga la puerta asegurada.
- Apague el interruptor antes de extraer o instalar fusibles o de hacer las conexiones en el lado de carga.
- Confirme siempre que el interruptor esta apagado, utilizando un dispositivo que mida la tension en todos los portafusibles instalados en el lado de linea y de carga.
- Desconecte toda la alimentacion al interruptor antes de realizar cualquier otro trabajo sobre este o en su interior.

El incumplimiento de estas precauciones podra causar la muerte o lesiones serias.

Para bloquear el interruptor, la abertura del candado debe pasar por el agujero en la cubierta de arriba y por encima de la manija.