

## APV Crepaco HTST

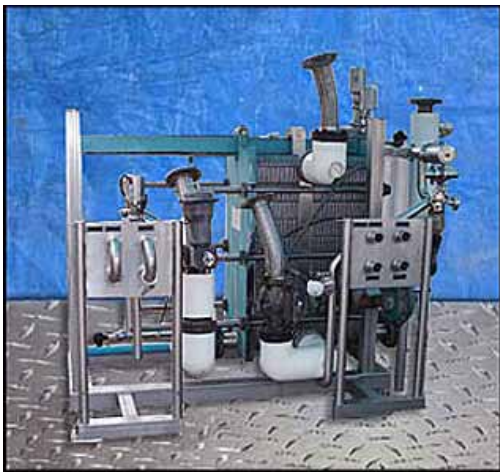
**Mfg: APV Crepaco**

**Model: SR35**

**Stock No.: CFPH358.41a**

**Serial No.: 76828**

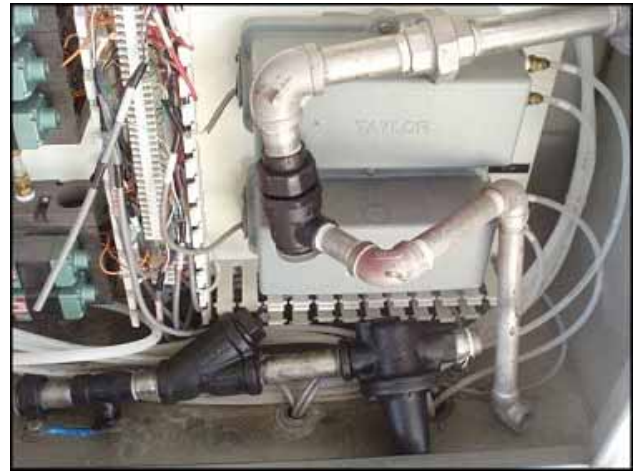
APV Crepaco HTST. Model: SR35. S/N: 76828. Nat'l Bd: 3066. W.O: 21308-2. Number of plates: 149. Heat transfer surface area: approx. 637 sq. ft. Number of dividers: 1. MAWP: 150 psig @ 275°F. MDMT: 5°F @ 150 psig. Bell & Gossett Shell & Tube Heat Exchanger, S/N: 89R77624-01-1, Nat'l Bd: 9210, shell side MAWP: 150 psi @ 375°F, shell side MDMT: -20°F @ 150 psi, tube side MAWP: 125 psi @ 375°F, tube side MDMT: -20°F @ 125 psi. Bell & Gossett Centrifugal Pump, Model: 1531-2.5AB-6.375BF. ID No. RLD20475B40. Baldor Industrial Motor, 3 hp, 1725 rpm, 208-230/460 V, 8.5-8.2/4.1 amps, 60 Hz, 3 phase. Condensate Tank- 13 Gallon, Inside straight-wall dimensions: 1 ft. dia. x 2 ft. 4 in. L. Fisher Pneumatic Valve Positioner, S/N: 11184270, Actuator type: 667, max. supply: 90 psi, operating range: 3-15 psi, Body type: ED, material: iron, size: 3, seat: 416 sst, stem plug: 316 sst/ 416 sst, rating: CL125. (3) Stainless Steel Pneumatic Valves. Hartel Stainless Steel Control Panel, dimensions: 2 ft 6 in. L x 1 ft. W x 3 ft. H. Inlets: (2) 3-1/2 in. dia. ports (product), (4) 3-1/2 in. dia. port. (steam). Outlets: (2) 3-1/2 in. dia. ports. (product), (1) 1-1/2 in. dia. port (steam), (1) 2-1/2 in. port. (steam), (2) 3-1/2 in. dia. (steam). Bell & Gossett overall dimensions: 7 ft. 1 in. L x 3 ft. 10 in. W x 6 ft. 3 in. H. APV Crepaco Heat Exchanger overall dimensions: 8 ft. L x 5 ft. 8 in. W x 6 ft 4 in. H.











CERTIFIED BY HEBELER

W MAWP 150 PSIG

MDMT 5 F

SERIAL 75828

HEBELER WELDING CO. INC.

PSIG AT 275 °F

150 PSIG

DATE 1989

Crepaco Inc

Lawanda, NY 14150

H 610

ASME P

APV Cr

Lawanda, NY 14150

H 610

NO.

MODEL 1531-2.5AB-6.375BF

NO.

IDENT. RLD20475B40

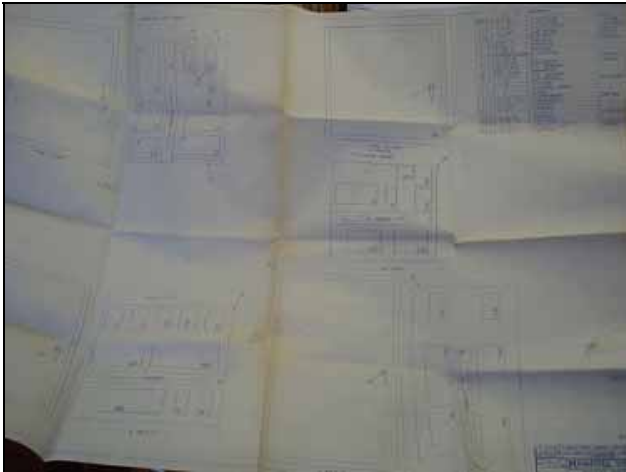
NO.

GPM

NAT'L BD. 9-10	
CERTIFIED BY  Bell & Gossett <small>ITT Fluid Technology Corporation BUFFALO, NY 14203</small>	
SHELL SIDE	MAX. ALLOWABLE WORKING PRESSURE 150 PSI at 375 °F MIN. DESIGN METAL TEMPERATURE -20 °F at 150 PSI
TUBE SIDE	MAX. ALLOWABLE WORKING PRESSURE 125 PSI at 375 °F MIN. DESIGN METAL TEMPERATURE -20 °F at 125 PSI
SER. NO. 89977624-1	
YEAR BUILT 1989	
PART NO. 5-260-10-024-001	

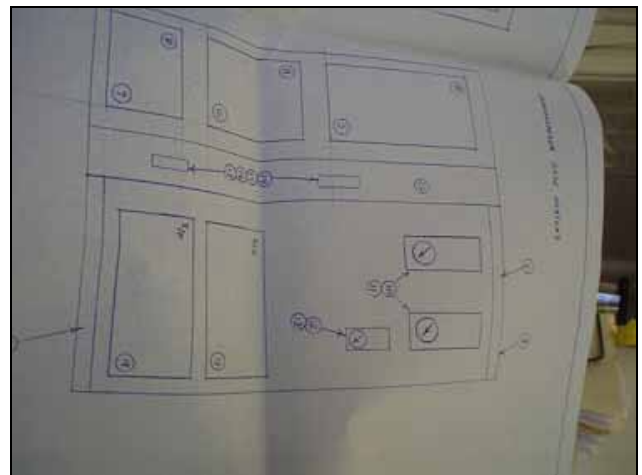
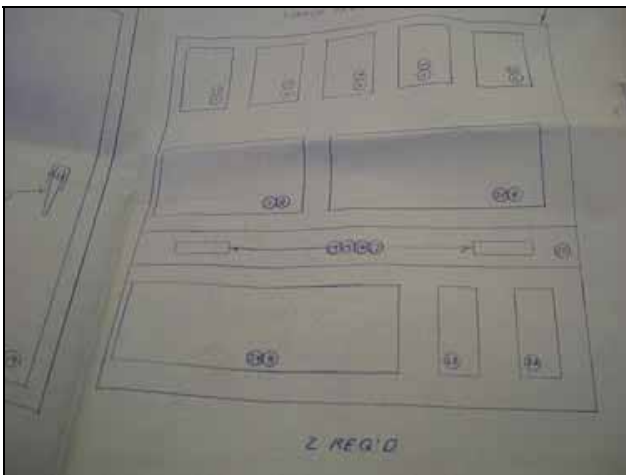
NAT'L BD. 9-10	
CERTIFIED BY  Bell & Gossett <small>ITT Fluid Technology Corporation BUFFALO, NY 14203</small>	
SHELL SIDE	MAX. ALLOWABLE WORKING PRESSURE 150 PSI at 375 °F MIN. DESIGN METAL TEMPERATURE -20 °F at 150 PSI
TUBE SIDE	MAX. ALLOWABLE WORKING PRESSURE 125 PSI at 375 °F MIN. DESIGN METAL TEMPERATURE -20 °F at 125 PSI
SER. NO. 89977624-1	
YEAR BUILT 1989	
PART NO. 5-260-10-024-001	





BILL OF MATERIAL

QTY	PART NO	DESCRIPTION	UNIT
1	16 1/2 270	ENCLOSURE	ENCLOSURE
2	3 1/2 28	SUB PANEL	SUB PANEL
3	3 1/2 28	WING DUCT	WING DUCT
4	3 1/2 28	MANIFOLD	MANIFOLD
5	4001-8	MANIFOLD	MANIFOLD
6	4001-8	MANIFOLD	MANIFOLD
7	4001-8	SOLENOID	SOLENOID
8	4001-8	SOLENOID	SOLENOID
9	4001-8	SOLENOID	SOLENOID
10	4001-8	SOLENOID	SOLENOID
11	4001-8	SOLENOID	SOLENOID
12	4001-8	SOLENOID	SOLENOID
13	4001-8	SOLENOID	SOLENOID
14	4001-8	SOLENOID	SOLENOID
15	4001-8	SOLENOID	SOLENOID
16	4001-8	SOLENOID	SOLENOID
17	4001-8	SOLENOID	SOLENOID
18	4001-8	SOLENOID	SOLENOID
19	4001-8	SOLENOID	SOLENOID
20	4001-8	SOLENOID	SOLENOID
21	4001-8	SOLENOID	SOLENOID
22	4001-8	SOLENOID	SOLENOID
23	4001-8	SOLENOID	SOLENOID
24	4001-8	SOLENOID	SOLENOID
25	4001-8	SOLENOID	SOLENOID
26	4001-8	SOLENOID	SOLENOID
27	4001-8	SOLENOID	SOLENOID
28	4001-8	SOLENOID	SOLENOID
29	4001-8	SOLENOID	SOLENOID
30	4001-8	SOLENOID	SOLENOID
31	4001-8	SOLENOID	SOLENOID
32	4001-8	SOLENOID	SOLENOID



NOV 22 1989

REV.	DATE	DESCRIPTION	BY
B	7-15-89	STARCH TANKS PANEL REVISION	DFK
A	8-10-89	MIX TANK ENCLOSURE REVISION	DFK

SCALE 1/4" = 1"

DATE 5-30-89

CUSTOMER BEATRICE HUNT-WESSON  
PENRY'S BURG, OH.

DRAWN BY DFK DESCRIPTION HOT WATER SETS PANEL LAYOUT  
STARCH MIX MILK/WATER  
PANEL LAYOUTS

CHECKED BY

APPROVED BY

SHEET 8 OF 12 DRAWING NUMBER EA136-5-08 REV B