

**1992 ADCO Manufacturing Stainless Steel Wrap Around Sleever with Thermo Scientific Metal Detector**

**Mfg: ADCO Manufacturing / Thermo Scientific**

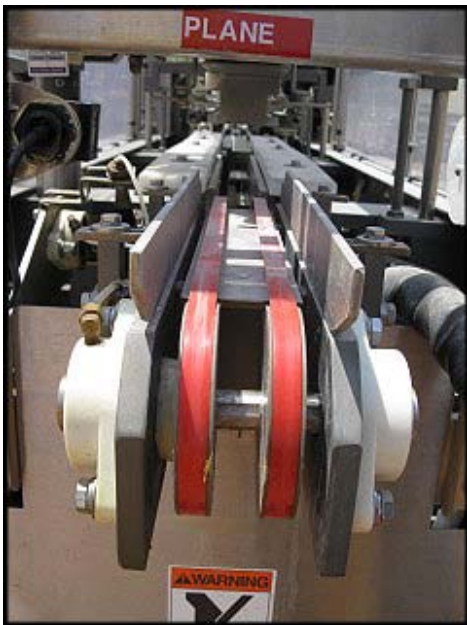
**Model: 105WA-170SS / APEX 300**

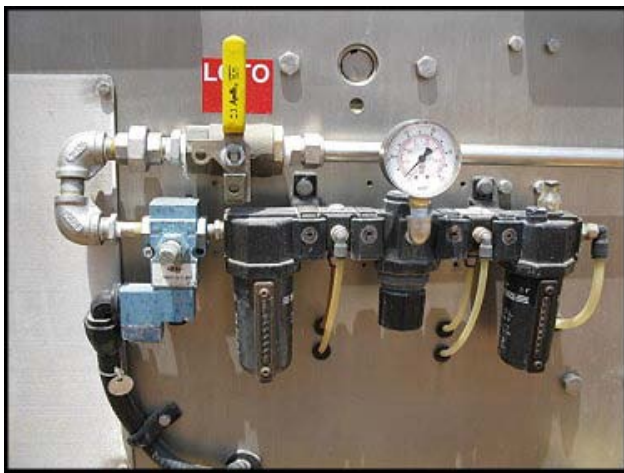
**Stock No: AAC2195.45**

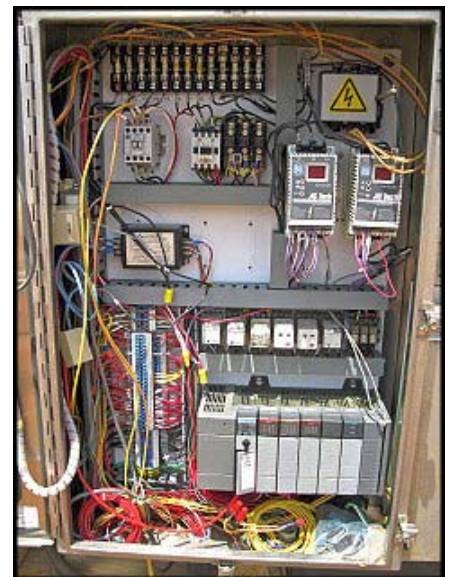
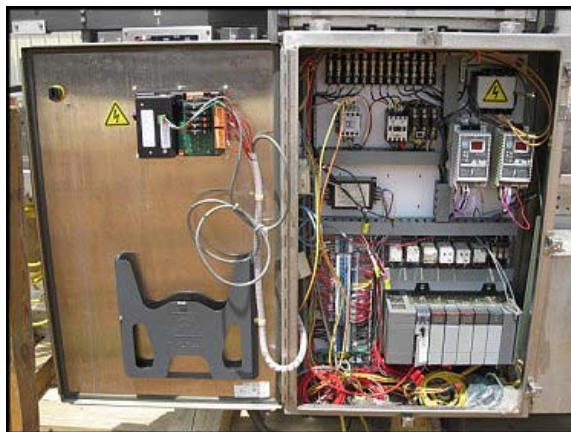
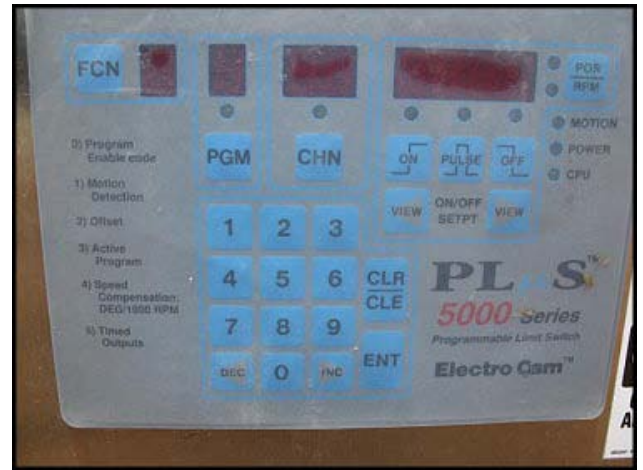
**Serial No: 3239HG / 08062701**

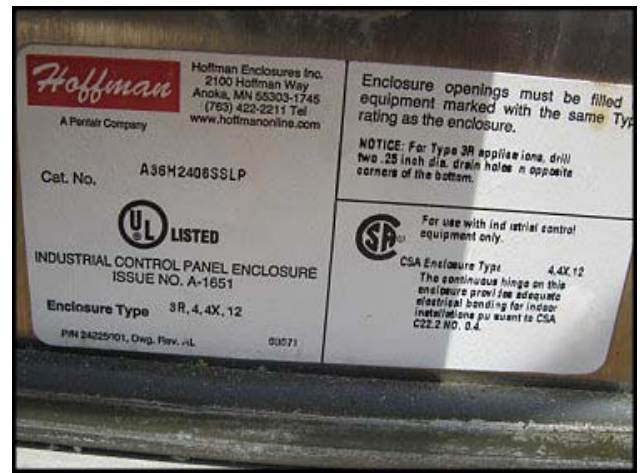
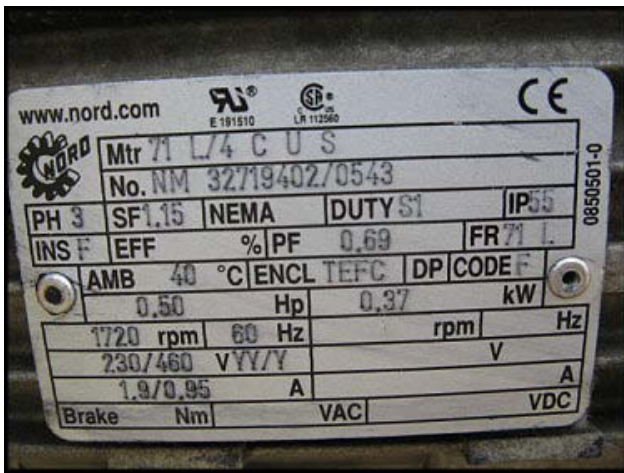
1992 ADCO Manufacturing Stainless Steel Wrap Around Sleever with Thermo Scientific Metal Detector. Model: 105WA-170SS. S/N: 3239HG. Thermo Scientific metal detector model: APEX 300 S/N: 08062701. Approximate sleever capacity: 250 containers per minute. Motor / electrical requirements: 1/2 hp Nord, 1720 rpm, (230V) / 460V, 15 amps, sf: 1.15, drive FLA: 7, 60 Hz, 3 phase. Controls include: (2) Hubbell® Bryant® rotary motor controller, Electro Cam Plus™ 5000 series programmable limit switch in stainless steel Hoffman enclosure, type: 3R, 4, 4x, 12. Features include: heavy duty shaft and gearbox internal drive, multi-head rotary carton feeder, automated speed control coordinated with product supply and stainless steel, wash down construction. Metal detector last rated: 2.0 mm Fe, 2.0 mm non-Fe, and 3.0 mm SS and features wash down construction. Maximum aperture clearance: 5-1/2 in. L x 5 in. W x 12 in. H. Product clearance above the belt: 9 in. Product clearance between installed guide rails: 3 in. Overall metal detector dimensions: 4 ft. 6 in. L x 2 ft. 1 in. W x 4 ft. 4 in. H. Overall sleever dimensions: 24 ft. L x 5 ft. 1 in. W x 6 ft. 7 in. H.(ACN2500).

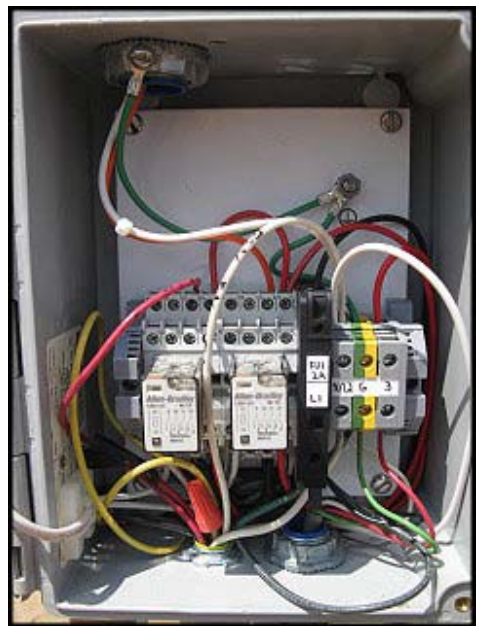
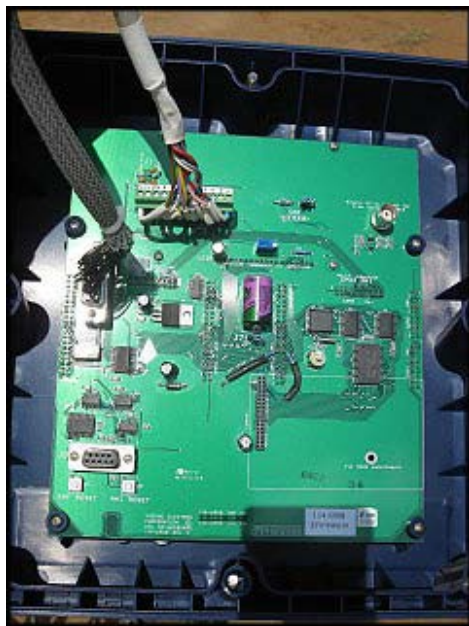




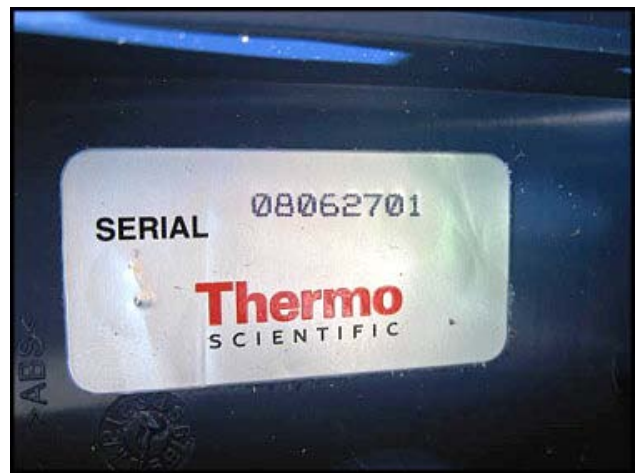








<b>Thermo Scientific</b> <b>Priority One Service</b> <b>(800) 227-8891</b>  www.thermo.com <b>Thermo</b> SCIENTIFIC	DATE SERVICED 9/28/10
	TECHNICIAN G. Smith
	SERIAL NUMBER 08062701
	NEXT SERVICE DUE 03/2011



**Hoffmann**  
A Perletr Company

Cat. No. A864CHSCFG

**UL** US LISTED  
INDUSTRIAL CONTROL PANEL ENCLOSURE  
ISSUE NO. A-1958  
UL CBA - C22.2 No. 94

Enclosure Type 4.4X,12,13  
Product Revision N/A

072A0

