

## Sellers Engineering Company Immersion Gas Fired Hot Water Boiler

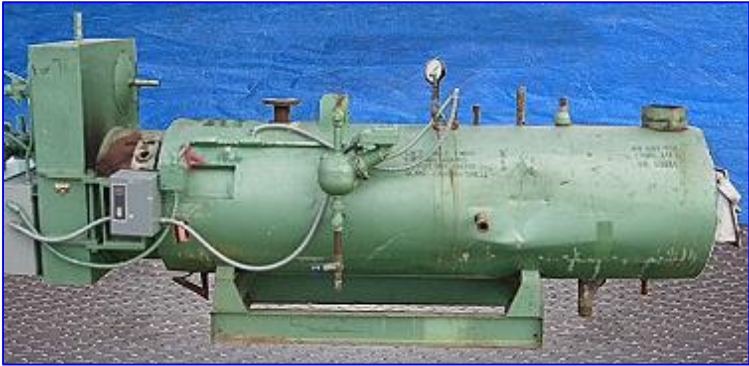
Mfg: Sellers Engineering Company

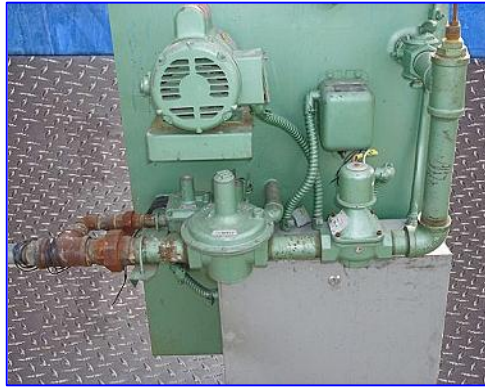
Model: 15 Commodore C – 20 – W

Stock No. APSG001.

Serial No. 8351

Sellers Engineering Company Immersion Gas Fired Hot Water Boiler. Model: 15 Commodore C . 20 . W. S/N: 8351. Natd Bd: 6444. Input 837,000 Btu, output 670,000 Btu. Normal water capacity: 147 gal. MAWP Water: 100 psi. Heat transfer surface area: 42.4 sq. ft. (12) 2 in. dia. tubes. Blower pressure (water column): 5 in. H<sub>2</sub>O. Manifold pressure (water column): 4.4 in. H<sub>2</sub>O. Baldor Industrial Motor, 1 hp, 3450 rpm, 115/230 V, 14.6/7.7 amps, 60 Hz, single phase. Inlets: (1) 1-1/2 in. dia. bevel port, (1) 1 in. dia. water supply port, (1) 2-1/2 in. dia. flanged steam port. Outlets: (1) 7-1/2 in. dia. steam supply vent, (1) 1-1/4 in. dia. pressure steam release valve, (1) 1 in. dia. NPT water return. Overall dimensions: 11 ft. 8 in. L x 47-1/2 in. W x 58-1/2 in. H.





Boiler Condensate Tank- 100 Gallon. Features internal float for water shut off. Spirax Sarco Steam Trap, Type: 1"B-3-125, WP 125# A90, BM: 62801. Inlets: (1) 1-1/2 in. dia. infeed, (2) 2 in. dia. infeed ports. Outlets: (1) 1-1/2 in. dia. ball-valve to steam trap. Overall dimensions: 40 in. L x 31 in. W x 84 in. H.

